

Compressed Text Indexes: From Theory to Practice

PAOLO FERRAGINA

University of Pisa

RODRIGO GONZÁLEZ and GONZALO NAVARRO

University of Chile

and

ROSSANO VENTURINI

University of Pisa

1.12

A *compressed full-text self-index* represents a text in a compressed form and still answers queries efficiently. This represents a significant advancement over the (full-)text indexing techniques of the previous decade, whose indexes required several times the size of the text. Although it is relatively new, this algorithmic technology has matured up to a point where theoretical research is giving way to practical developments. Nonetheless this requires significant programming skills, a deep engineering effort, and a strong algorithmic background to dig into the research results. To date only isolated implementations and focused comparisons of compressed indexes have been reported, and they missed a common API, which prevented their re-use or deployment within other applications.

The goal of this article is to fill this gap. First, we present the existing implementations of compressed indexes from a practitioner's point of view. Second, we introduce the *Pizza&Chili* site, which offers tuned implementations and a standardized API for the most successful compressed full-text self-indexes, together with effective test-beds and scripts for their automatic validation and test. Third, we show the results of our extensive experiments on these codes with the aim of demonstrating the practical relevance of this novel algorithmic technology.

Categories and Subject Descriptors: F.2.2 [**Analysis of Algorithms and Problem Complexity**]: Nonnumerical Algorithms and Problems—*Pattern matching, computations on discrete structures, sorting and searching*; H.2.1 [**Database Management**]: Physical Design—*Access methods*; H.3.2

Partially supported by Yahoo! Research grants “Data compression and indexing in hierarchical memories” (Barcelona) and “Compressed data structures” (Chile), Italian MIUR grants Italy-Israel FIRB “Pattern Discovery Algorithms in Discrete Structures, with Applications to Bioinformatics”, PRIN “MainStream: MAssive INformation structures and dataSTREAMs”, and Millennium Nucleus Center for Web Research, Grant P04-067-F, Mideplan, Chile.

Authors' addresses: P. Ferragina and R. Venturini, Dept. of Computer Science, University of Pisa; email: {ferragina,rventurini}@di.unipi.it; R. González and G. Navarro, Dept. of Computer Science, University of Chile; email: {rgonzale,gnavarro}@dcc.uchile.cl.

Permission to make digital or hard copies of part or all of this work for personal or classroom use is granted without fee provided that copies are not made or distributed for profit or direct commercial advantage and that copies show this notice on the first page or initial screen of a display along with the full citation. Copyrights for components of this work owned by others than ACM must be honored. Abstracting with credit is permitted. To copy otherwise, to republish, to post on servers, to redistribute to lists, or to use any component of this work in other works requires prior specific permission and/or a fee. Permissions may be requested from Publications Dept., ACM, Inc., 2 Penn Plaza, Suite 701, New York, NY 10121-0701, USA, fax +1 (212) 869-0481, or permissions@acm.org. © 2008 ACM 1084-6654/2008/12-ART1.12 \$5.00 DOI 10.1145/1412228.1455268 <http://doi.acm.org/10.1145/1412228.1455268>

[Information Storage and Retrieval]: Information Storage—*File organization*; H.3.3 **[Information Storage and Retrieval]:** Information Search and Retrieval—*Search process*

General Terms: Algorithms

Additional Key Words and Phrases: Text indexing, text compression, data structures, data storage representation, coding and information theory, indexing methods, textual databases, bioinformatics databases

ACM Reference Format:

Ferragina, P., González, R., Navarro, G., and Venturini, R. 2008. Compressed text indexes: From theory to practice. *ACM J. Exp. Algor.* 13, Article 1.12 (December 2008), 31 pages. DOI = 10.1145/1412228.1455268 <http://doi.acm.org/10.1145/1412228.1455268>

1. INTRODUCTION

A large fraction of the data we process every day consists of a sequence of symbols over an alphabet, and hence is a *text*. Unformatted natural language, XML and HTML collections, program codes, music sequences, DNA and protein sequences, are just the typical examples that come to our mind when thinking of text incarnations. Most of the manipulations required over those sequences involve, sooner or later, *searching* those (usually long) sequences for (usually short) pattern sequences. Not surprisingly, text searching and processing has been a central issue in Computer Science research since its beginnings.

Despite the increase in processing speeds, sequential text searching long ago ceased to be a viable alternative for many applications, and indexed text searching has become mandatory. A *text index* is a data structure built over a text which significantly speeds up searches for arbitrary patterns, at the cost of some additional space. The inverted list structure (see, e.g., Witten et al. [1999]) is an extremely popular index to handle so-called “natural language” texts, due to its simplicity, low space requirements, and fast query execution. An inverted list is essentially a table recording the positions of the occurrences of every distinct word in the indexed text. Thus every word-based query is already pre-computed, and phrase queries are carried out via list intersections. These design features made inverted lists the *de facto* choice for the implementation of Web search engines and IR systems (see e.g. Witten et al. [1999], Zobel and Moffat [2006], and references therein).

There are contexts, however, in which either the texts or the queries cannot be factored out into sequences of words, or it is the case that the number of distinct words is so large that indexing all of them in a table would be too much space consuming. Typical examples include bio-informatics, computational linguistics, multimedia databases, and search engines for agglutinating and Far East languages. In these cases, texts and queries must be modeled as arbitrarily long sequences of symbols and an index for these types of texts, in order to be efficient, must be able to search and retrieve any *substring* of *any* length. These are nowadays the so called *full-text indexes*.

Unfortunately, full-text indexes wasted a lot of space: Data structures like suffix trees and suffix arrays require at the very least four times the text size (plus text) to achieve reasonable efficiency [Aluru and Ko 2008; Gusfield 1997]. Several engineered versions achieved relevant, yet not spectacular, reductions

in space [Andersson and Nilsson 1995; Kärkkäinen 1995; Kärkkäinen and Ukkonen 1996a, 1996b; Giegerich et al. 2003]. For example, space consumptions like 2.5 times the text size, plus text, were reported (see survey by Navarro et al. [2001]).

Although space consumption by itself is not usually a problem today given the availability of cheap massive storage, the access speed of that storage has not improved much, while CPU speeds have been doubling every 24 months, as well the sizes of the various (internal) memory levels. Given that nowadays an access to the disk can be up to one million times slower than main memory, it is often mandatory to fit the index in internal memory and leave as few data as possible onto disk.

A folklore alternative way to further reduce the space of full-text indexes are the so-called *q-gram* indexes [Ullman 1977; Jokinen and Ukkonen 1991; Sutinen and Tarhio 1996; Lehtinen et al. 1996; Navarro and Baeza-Yates 1998; Williams and Zobel 2002; Puglisi et al. 2006] (more references in Navarro et al. [2001]). This can be seen as an adaptation of the inverted-list scheme that takes as a “word” any *q-gram* occurring in the indexed text (i.e., any substring of length q), and stores all occurrences of these *q-grams* within a table. Queries are solved by intersecting/joining lists of *q-gram* occurrences depending on whether the query pattern is longer/shorter than q . In principle this index can take as much as four times the text size, as each text position starts a *q-gram* and thus spends one integer in some list. The space can be alleviated by several means, already explored in the cited papers: (1) compressing the inverted lists, since they contain increasing numbers, as done for classical inverted indexes [Witten et al. 1999]; (2) indexing spaced text *q-grams*, while still finding all the occurrences (e.g., Sutinen and Tarhio [1996]); (3) using *block-addressing*, first introduced to reduce the space of natural-language indexes [Manber and Wu 1994] and later extended to *q-gram* indexes (e.g., Lehtinen et al. [1996], Puglisi et al. [2006]). In block-addressing, the text is divided into blocks and the index only points to the blocks where the *q-grams* appear. This permits achieving very little index space at the price of having to scan the candidate text blocks. Hence the text must be separately available in a form that permits fast scanning. Block-addressing has been successfully combined with the compression of the text in the case of natural language [Navarro et al. 2000], but not in general text as far as we know. Besides needing the text in plain form, these indexes do not offer relevant worst-case search time guarantees.

This situation is drastically changed in the last decade [Navarro and Mäkinen 2007]. Starting in the year 2000, a rapid sequence of achievements showed how to relate information theory with string matching concepts. The regularities in compressible texts were exploited to reduce index occupancy without impairing the query efficiency. The overall result has been the design of full-text indexes whose size is proportional to that of the *compressed* text. Moreover, those indexes are able to reproduce any text portion without accessing the original text, and thus they *replace* the text—hence the name *self-indexes*. This way *compressed full-text self-indexes* (compressed indexes, for short) allow one to add search and random access functionalities to compressed data with a negligible penalty in time and space performance. For

example, it is feasible today to index the 3 GB Human genome on a 1 GB RAM desktop PC.

This paper is devoted to a practical study of this novel technology. Although a comprehensive survey of its theoretical aspects has recently appeared [Navarro and Mäkinen 2007], the algorithmics underlying these compressed indexes require for their implementation a significant programming skill, a deep engineering effort, and a strong algorithmic background. To date only isolated implementations and focused comparisons of compressed indexes have been reported, and they missed a common API, which prevented their reuse or deploy within other applications. This article, therefore, has a threefold purpose:

Algorithmic Engineering. We review the most successful compressed indexes that have been implemented so far, and present them in a way that may be useful for software developers, by focusing on implementation choices as well as on their limitations. We think that this point of view complements [Navarro and Mäkinen 2007] and fixes the state-of-the-art for this technology, possibly stimulating improvements in the design of such sophisticated algorithmic tools. In addition, we introduce two novel implementations of compressed indexes. These correspond to new versions of the FM-Index data structure, one of which combines the best existing theoretical guarantees with a competitive space/time tradeoff in practice.

Experimental. We experimentally compare a selected subset of implementations. This serves not only to help programmers in choosing the best index for their needs, but also gives a grasp of the practical relevance of this novel algorithmic technology.

Technology Transfer. We introduce the *Pizza&Chili* site,¹ which was developed with the aim of providing publicly available implementations of compressed indexes. Each implementation is well-tuned and adheres to a suitable API of functions which should, in our intention, allow any programmer to easily plug the provided compressed indexes within his/her own software. The site also offers a collection of texts and tools for experimenting and validating the proposed compressed indexes. We hope that this simple API and the good performance of those indexes will spread their use in several applications.

The use of compressed indexes is obviously not limited to plain text searching. Every time one needs to store a set of strings which must be subsequently accessed for query-driven or id-driven string retrieval, one can use a compressed index with the goal of squeezing the dictionary space without slowing down the query performance. This is the subtle need that any programmer faces when implementing hash tables, tries or other indexing data structures. Actually, the use of compressed indexes has been successfully extended to handle several other more sophisticated data structures, such as dictionary indexes [Ferragina and Venturini 2007a], labeled trees Ferragina et al. [2005, 2006], graphs [Claude 2008], images [Mäkinen and Navarro 2008b], etc. Dealing with

¹Available at two mirrors: `pizzachili.dcc.uchile.cl` and `pizzachili.di.unipi.it`.

all those applications is out of the scope of this article, whose main goal is to address the above three issues, and comment on the experimental behavior of this new algorithmic technology.

This article is organized as follows. Section 2 explains the key conceptual ideas underlying the most relevant compressed indexes. Section 3 describes how the indexes implement those basic ideas. Section 4 presents the *Pizza&Chili* site, and the next Section 5 comments on a large suite of experiments aimed at comparing the most successful implementations of the compressed indexes present in this Web site. Finally, Section 6 concludes this article by summarizing its contributions and exploring the future of the area.

2. BASIC CONCEPTS

Let us introduce some notation. We will refer to *strings* with $S = S[1, \ell] = S_{1,\ell} = s_1s_2 \dots s_\ell$ to denote a sequence of symbols over an alphabet Σ of size σ . By $S[i, j] = S_{i,j} = s_i s_{i+1} \dots s_j$ we will denote substrings of S , which are called *prefixes* if $i = 1$ or *suffixes* if $j = \ell$. The length of a string will be written $|S| = |S_{1,\ell}| = \ell$, and the reverse of a string will be written $S^r = s_\ell s_{\ell-1} \dots s_1$.

The *text searching problem* is then stated as follows. Given a *text* string $T[1, n]$ and a *pattern* $P[1, m]$, we wish to answer the following queries: (1) *count* the number of occurrences (*occ*) of P in T ; (2) *locate* the *occ* positions in T where P occurs. In this paper we assume that T can be preprocessed, and an *index* is built on it, in order to speed up the execution of subsequent queries. We assume that the cost of index construction is amortized over sufficiently many searches, as otherwise sequential searching is preferable.

In the case of self-indexes, which replace the text, a third operation of interest is (3) *extract* the substring $T_{l,r}$, given positions l and r in T .

For technical convenience, we will assume that the last text character is $t_n = \$$, a special end-marker symbol that belongs to Σ but does not appear elsewhere in T nor P , and that is lexicographically smaller than any other symbol in Σ .

2.1 Classical Full-Text Indexes

Many different indexing data structures have been proposed in the literature for text searching, most notably suffix trees and suffix arrays (see, e.g., Aluru and Ko [2008], Gusfield [1997] and references therein).

The *suffix tree* of a text T is a trie (or digital tree) built on all the n suffixes $T_{i,n}$ of T , where unary paths are compressed to ensure $O(n)$ size. The suffix tree has n leaves, each corresponding to a suffix of T , and each internal suffix tree node corresponds to a unique substring of T that appears more than once. The suffix tree can count the pattern occurrences in time $O(m)$, independent of n and *occ*, by descending in the tree according to the successive symbols of P (each node should store the number of leaves that descend from it). Afterwards, it can locate the occurrences in optimal $O(\text{occ})$ time by traversing the subtree of the node arrived at counting. The suffix tree, however, uses much more space than the text itself. In theoretical terms, it uses $\Theta(n \log n)$ bits, whereas the

text needs $n \log \sigma$ bits (logarithms are in base 2 unless otherwise stated). In practice, a suffix tree requires from 10 to 20 times the text size.

The *suffix array* is a compact version of the suffix tree. It still requires $\Theta(n \log n)$ bits, but the constant is smaller: 4 times the text size in practice. The suffix array $A[1, n]$ of a text $T_{1, n}$ contains all the starting positions of the suffixes of T listed in lexicographical order, that is, $T_{A[1], n} < T_{A[2], n} < \dots < T_{A[n], n}$. Array A can be obtained by traversing the leaves of the suffix tree, or it can be built directly by naive or sophisticated ad-hoc sorting methods [Puglisi et al. 2007].

Any substring of T is the prefix of a text suffix, thus finding all the occurrences of P is equivalent to finding all the text suffixes that start with P . Those form a lexicographical interval in A , which can be binary searched in $O(m \log n)$ time, as each comparison in the binary search requires examining up to m symbols of the pattern and a text suffix. The time can be reduced to $O(m + \log n)$, by using an auxiliary structure that doubles the space requirement of the suffix array [Manber and Myers 1993], or even to $O(m + \log |\Sigma|)$ by adding some further data structures (called *suffix trays* [Cole et al. 2006]). Once the interval $A[sp, ep]$ containing all the text suffixes starting with P has been identified, counting is solved as $occ = ep - sp + 1$, and the occurrences are located at $A[sp], A[sp + 1], \dots, A[ep]$.

2.2 Backward Search

In the previous section, we described the classical binary-search method over suffix arrays. Here, we review an alternative approach which has been recently proposed in Ferragina and Manzini [2005], hereafter named *backward search*. For any $i = m, m - 1, \dots, 1$, this search algorithm keeps the interval $A[sp_i, ep_i]$ storing all text suffixes, which are prefixed by $P_{i, m}$. This is done via two main steps:

Initial step. We have $i = m$, so that it suffices to access a precomputed table that stores the pair (sp_m, ep_m) for all possible symbols $p_m \in \Sigma$.

Inductive step. Let us assume to have computed the interval $A[sp_{i+1}, ep_{i+1}]$, whose suffixes are prefixed by $P_{i+1, m}$. The present step determines the next interval $A[sp_i, ep_i]$ for $P_{i, m}$ from the previous interval and the next pattern symbol p_i . The implementation is not obvious, and leads to different realizations of backward searching in several compressed indexes, with various time performances.

The backward-search algorithm is executed by decreasing i until either an empty interval is found (i.e., $sp_i > ep_i$), or $A[sp_1, ep_1]$ contains all pattern occurrences. In the former case, no pattern occurrences are found; in the latter case, the algorithm has found $occ = ep_1 - sp_1 + 1$ pattern occurrences.

2.3 Rank Query

Given a string $S[1, n]$, function $rank_x(S, i)$ returns the number of times symbol x appears in the prefix $S[1, i]$. Rank queries are central to compressed indexing, so it is important to understand how they are implemented and how much space/time they need. We have two cases depending on the alphabet of S .

Rank over Binary Sequences. In this case, there exist simple and practical constant-time solutions using $o(n)$ bits of space in addition to S [Munro 1996]. We cover only $rank_1$ as $rank_0(S, i) = i - rank_1(S, i)$. The solution partitions S into blocks of size s , and stores explicit answers for rank-queries done at block beginnings. One of the best practical implementations of the idea [González et al. 2005] solves $rank_1(S, i)$ by summing two quantities: (1) the precomputed answer for the prefix of S which ends at the beginning of the block enclosing $S[i]$, plus (2) the *relative* rank of $S[i]$ within its block. The latter is computed via a byte-wise scanning of the block, using small precomputed tables. This solution involves a space/time tradeoff related to s , but nonetheless its query-time performance is rather satisfactory already with 5% space overhead on top of S .

Rank over General Sequences. Given a sequence $S[1, n]$ over an alphabet of size σ , the *wavelet tree* [Grossi et al. 2003; Foschini et al. 2006] is a perfect binary tree of height $\Theta(\log \sigma)$, built on the alphabet symbols, such that the root represents the whole alphabet and each leaf represents a distinct alphabet symbol. If a node v represents alphabet symbols in the range $\Sigma^v = [i, j]$, then its left child v_l represents $\Sigma^{v_l} = [i, \frac{i+j}{2}]$ and its right child v_r represents $\Sigma^{v_r} = [\frac{i+j}{2} + 1, j]$. We associate to each node v the subsequence S^v of S formed by the symbols in Σ^v . Sequence S^v is not really stored at the node, but it is replaced by a bit sequence B^v such that $B^v[i] = 0$ iff $S^v[i]$ is a symbol whose leaf resides in the left subtree of v . Otherwise, $B^v[i]$ is set to 1.

The power of the wavelet tree is to reduce rank operations over general alphabets to rank operations over a binary alphabet, so that the rank-machinery above can be used in each wavelet-tree node. Precisely, let us answer the query $rank_c(S, i)$. We start from the root v of the wavelet tree (with associated vector B^v), and check which subtree encloses the queried symbol c . If c descends into the right subtree, we set $i \leftarrow rank_1(B^v, i)$ and move to the right child of v . Similarly, if c belongs to the left subtree, we set $i \leftarrow rank_0(B^v, i)$ and go to the left child of v . We repeat this until we reach the leaf that represents c , where the current i value is the answer to $rank_c(S, i)$. Since any binary-rank takes $O(1)$ time, the overall rank operation takes $O(\log \sigma)$ time.

We note that the wavelet tree can replace S as well: to obtain $S[i]$, we start from the root v of the wavelet tree. If $B^v[i] = 0$, then we set $i \leftarrow rank_0(B^v, i)$ and go to the left child. Similarly, if $B^v[i] = 1$, then we set $i \leftarrow rank_1(B^v, i)$ and go to the right child. We repeat this until we reach a leaf, where the symbol associated to the leaf is the answer. Again, this takes $O(\log \sigma)$ time.

The wavelet tree requires comparable space to the original sequence, as it requires $n \log \sigma (1 + o(1))$ bits of space. A practical way to reduce the space occupancy to the zero-order entropy of S is to replace the balanced tree structure by the Huffman tree of S . Now we have to follow the binary Huffman code of a symbol to find its place in the tree. It is not hard to see that the total number of bits required by such a tree is at most $n(H_0(S) + 1) + o(n \log \sigma)$ and the average time taken by rank and access operations is $O(H_0(S))$, where H_0 is the zero-th order empirical entropy of S (see next section). This structure is the key tool in our implementation of SSA or AF-index (Section 5).

2.4 The k -th Order Empirical Entropy

The *empirical entropy* resembles the entropy defined in the probabilistic setting (e.g., when the input comes from a Markov source), but now it is defined for any finite individual string and can be used to measure the performance of compression algorithms without any assumption on the input distribution [Manzini 2001].

The empirical zero-order entropy of a text T is defined as

$$H_0(T) = \sum_{c \in \Sigma} \frac{n_c}{n} \log \frac{n}{n_c}, \quad (1)$$

where n_c is the number of occurrences of symbol c in T . This definition extends to $k > 0$ as follows. Let Σ^k be the set of all sequences of length k over Σ . For any string $w \in \Sigma^k$, called a *context* of size k , let w_T be the string consisting of the concatenation of individual symbols following w in T . Then, the k -th order empirical entropy of T is defined as

$$H_k(T) = \frac{1}{n} \sum_{w \in \Sigma^k} |w_T| H_0(w_T). \quad (2)$$

The k -th order empirical entropy captures the dependence of symbols upon their k -long context. For $k \geq 0$, $nH_k(T)$ provides a lower bound to the number of bits output by any compressor that considers a context of size k to encode each symbol of T (e.g., PPM-like compressors). Note that $0 \leq H_k(T) \leq H_{k-1}(T) \leq \dots \leq H_1(T) \leq H_0(T) \leq \log \sigma$. Several compressed indexes achieve $O(nH_k(T))$ bits of space, instead of $O(nH_k(T))$, as they work on the contexts *following* (rather than preceding) the symbol to be encoded. Nonetheless, we will not point out such a difference because one can always work on the reversed text (and patterns) if necessary, and also because both k -th order entropies differ by lower order terms [Ferragina and Manzini 2005].

2.5 The Burrows-Wheeler Transform

The *Burrows-Wheeler Transform (BWT)* [Burrows and Wheeler 1994] is a key tool in designing compressed full-text indexes. It is a reversible permutation of T , which has the nice property of putting together symbols followed by the same context. This ensures that the permuted T offers better compression opportunities: a locally adaptive zero-order compressor is able to achieve on this string the k -th order entropy of T (recall Eq. (2)). The BW-transform works as follows:

- (1) Create a conceptual matrix M , whose rows are cyclic shifts of T .
- (2) Sort the matrix rows lexicographically.
- (3) Define the last column of M as the BWT of T , and call it T^{bwt} .

There is a close relationship between matrix M and the suffix array A of text T , because when we lexicographically sort the rows, we are essentially sorting the suffixes of T (recall indeed that $t_n = \$$ is smaller than any other alphabet symbol). Specifically, $A[i]$ points to the suffix of T which prefixes

the i -th row of M . Hence, another way to describe T^{bwt} is to concatenate the symbols that precede each suffix of T in the order listed by A , that is, $T^{bwt} = t_{A[1]-1} t_{A[2]-1} \dots t_{A[n]-1}$, where we assume that $t_0 = t_n$.

Given the way matrix M has been built, all columns of M are permutations of T . So the first and last column of M are indeed one a permutation of the other. The question is how to map symbols in the last column T^{bwt} to symbols in the first column. It is easy to see [Burrows and Wheeler 1994] that occurrences of equal symbols preserve their relative order in the last and the first columns of M . Thus, the j -th occurrence of a symbol c within T^{bwt} corresponds to the j -th occurrence of c in the first column. If $c = T^{bwt}[i]$, then we have that $j = \text{rank}_c(T^{bwt}, i)$ in the last column; whereas in the first column, where the symbols are sorted alphabetically, the j -th occurrence of c is at position $C[c] + j$, where $C[c]$ counts the number of occurrences in T of symbols smaller than c . By plugging one formula in the other we derive the so called *Last-to-First column mapping* (or, LF-mapping): $LF(i) = C[c] + \text{rank}_c(T^{bwt}, i)$. We talk about LF-mapping because the symbol $c = T^{bwt}[i]$ is located in the first column of M at position $LF(i)$.

The LF-mapping allows one to navigate T backwards: if $t_k = T^{bwt}[i]$, then $t_{k-1} = T^{bwt}[LF(i)]$ because row $LF(i)$ of M starts with t_k and thus ends with t_{k-1} . As a result we can reconstruct T backwards by starting at the first row, equal to $\$T$, and repeatedly applying LF for n steps.

3. COMPRESSED INDEXES

As explained in the Introduction, compressed indexes provide a viable alternative to classical indexes that are parsimonious in space and efficient in query time. They have undergone significant development in the last years, so that we count now in the literature many solutions that offer a plethora of space-time tradeoffs [Navarro and Mäkinen 2007]. In theoretical terms, the most succinct indexes achieve $nH_k(T) + o(n \log \sigma)$ bits of space, and for a fixed $\epsilon > 0$, require $O(m \log \sigma)$ counting time, $O(\log^{1+\epsilon} n)$ time per located occurrence, and $O(\ell \log \sigma + \log^{1+\epsilon} n)$ time to extract a substring of T of length ℓ .² This is a surprising result because it shows that whenever $T[1, n]$ is compressible it can be indexed into smaller space than its plain form and still offer search capabilities in efficient time.

In the following, we review the most competitive compressed indexes for which there is an implementation we are aware of. We will review the FM-index family, which builds on the BWT and backward searching; Sadakane's Compressed Suffix Array (CSA), which is based on compressing the suffix array via a so-called Ψ function that captures text regularities; and the LZ-index, which is based on Lempel-Ziv compression. All of them are self-indexes in that they include the indexed text, which, therefore, may be discarded.

²These locating and extracting complexities are better than those reported in [Ferragina et al. 2007], and can be obtained by setting the sampling step to $\frac{\log^{1+\epsilon} n}{\log \sigma}$.

```

Algorithm FM-count( $P_{1,m}$ )
 $i \leftarrow m, sp \leftarrow 1, ep \leftarrow n;$ 
while ( $(sp \leq ep)$  and ( $i \geq 1$ )) do
     $c \leftarrow p_i;$ 
     $sp \leftarrow C[c] + \text{rank}_c(T^{bwt}, sp - 1) + 1;$ 
     $ep \leftarrow C[c] + \text{rank}_c(T^{bwt}, ep);$ 
     $i \leftarrow i - 1;$ 
if ( $sp > ep$ ) then return “no occurrences of  $P$ ” else return  $\langle sp, ep \rangle;$ 

```

Fig. 1. Algorithm to get the interval $A[sp, ep]$ of text suffixes prefixed by P , using an FM-index.

```

Algorithm FM-locate( $i$ )
 $i' \leftarrow i, t \leftarrow 0;$ 
while  $A[i']$  is not explicitly stored do
     $i' \leftarrow LF(i');$ 
     $t \leftarrow t + 1;$ 
return  $A[i'] + t;$ 

```

Fig. 2. Algorithm to obtain $A[i]$ using an FM-index.

3.1 The FM-index Family

The FM-index is composed of a compressed representation of T^{bwt} plus auxiliary structures for efficiently computing generalized rank queries on it. The main idea [Ferragina and Manzini 2005] is to obtain a text index from the BWT and then use backward searching for identifying the pattern occurrences (Sections 2.2 and 2.5). Several variants of this algorithmic scheme do exist [Ferragina and Manzini 2001, 2005; Mäkinen and Navarro 2005; Ferragina et al. 2007], which induce several time/space tradeoffs for the counting, locating, and extracting operations.

Counting. The counting procedure takes a pattern P and obtains the interval $A[sp, ep]$ of text suffixes prefixed by it (or, which is equivalent, the interval of rows of the matrix M prefixed by P , see Section 2.5). Figure 1 gives the pseudocode to compute sp and ep .

The algorithm is correct: Let $[sp_{i+1}, ep_{i+1}]$ be the range of rows in M that start with $P_{i+1,m}$, and we wish to know which of those rows are preceded by p_i . These correspond precisely to the occurrences of p_i in $T^{bwt}[sp_{i+1}, ep_{i+1}]$. Those occurrences, mapped to the first column of M , form a (contiguous) range that is computed with a rationale similar to that for $LF(\cdot)$ in Section 2.5, and thus via a just two rank operations on T^{bwt} .

Locating. Algorithm in Figure 2 obtains the position of the suffix that prefixes the i -th row of M . The basic idea is to logically mark a suitable set of rows of M , and keep for each of them their position in T (i.e., we store the corresponding A values). Then, $\text{FM-locate}(i)$ scans the text T backwards using the LF -mapping until a marked row i' is found, and then it reports $A[i'] + t$, where t is the number of backward steps used to find such i' . To compute the positions of all occurrences of a pattern P , it is thus enough to call $\text{FM-locate}(i)$ for every $sp \leq i \leq ep$.

The sampling rate of M 's rows, hereafter denoted by s_A , is a crucial parameter that trades space for query time. Most FM-index implementations mark all the $A[i]$ that are a multiple of s_A , via a bitmap $B[1, n]$. All the marked $A[i]$ s are stored contiguously in suffix array order, so that if $B[i] = 1$ then one finds the corresponding $A[i]$ at position $\text{rank}_1(B, i)$ in that contiguous storage. This guarantees that at most s_A LF-steps are necessary for locating the text position of any occurrence. The extra space is $\frac{n \log n}{s_A} + n + o(n)$ bits.

A way to avoid the need of bitmap B is to choose a symbol c having some suitable frequency in T , and then store $A[i]$ if $T^{bwt}[i] = c$ [Ferragina and Manzini 2001]. Then the position of $A[i]$ in the contiguous storage is $\text{rank}_c(T^{bwt}, i)$, so no extra space is needed other than T^{bwt} . In exchange, there is no guarantee of finding a marked cell after a given number of steps.

Extracting. The same text sampling mechanism used for locating permits extracting text substrings. Given s_A , we store the positions i such that $A[i]$ is a multiple of s_A now in the text order (previously we followed the A -driven order). To extract $T_{l,r}$, we start from the first sample that follows the area of interest, that is, sample number $d = \lceil (r + 1)/s_A \rceil$. From it, we obtain the desired text backwards with the same mechanism for inverting the BWT (see Section 2.5), here starting with the value i stored for the d -th sample. We need at most $s_A + r - l + 1$ applications of the LF-step.

3.2 Implementing the FM-index

All the query complexities are governed by the time required to obtain $C[c]$, $T^{bwt}[i]$, and $\text{rank}_c(T^{bwt}, i)$ (all of them implicit in LF as well). While C is a small table of $\sigma \log n$ bits, the other two are problematic. Counting requires up to $2m$ calls to rank_c , locating requires s_A calls to rank_c and T^{bwt} , and extracting ℓ symbols requires $s_A + \ell$ calls to rank_c and T^{bwt} . In what follows we briefly comment on the solutions adopted to implement those basic operations.

The original FM-index implementation (*FM-index* [Ferragina and Manzini 2001]) compressed T^{bwt} by splitting it into blocks and using independent zero-order compression on each block. Values of rank_c are precomputed for all block beginnings, and the rest of the occurrences of c from the beginning of the block to any position i are obtained by sequentially decompressing the block. The same traversal finds $T^{bwt}[i]$. This is very space-effective: It approaches in practice the k -th order entropy because the partition into blocks takes advantage of the local compressibility of T^{bwt} . On the other hand, the time to decompress the block makes computation of rank_c relatively expensive. For locating, this implementation marks the BWT positions where some chosen symbol c occurs, as explained above.

A very simple and effective alternative to represent T^{bwt} has been proposed with the *Succinct Suffix Array (SSA)* [Ferragina et al. 2007; Mäkinen and Navarro 2005]. It uses a Huffman-shaped wavelet tree, plus the marking of one out-of- s_A text positions for locating and extracting. The space is $n(H_0(T) + 1) + o(n \log \sigma)$ bits, and the average time to determine $\text{rank}_c(T^{bwt}, i)$ and $T^{bwt}[i]$ is $O(H_0(T) + 1)$. The space bound is not appealing because of the zero-order compression, but the relative simplicity of this index makes it rather

fast in practice. In particular, it is an excellent option for DNA text, where the k -th order compression is not much better than the zero-th order one, and the small alphabet makes $H_0(T) \leq \log \sigma$ small too.

The *Run-Length FM-index (RLFM)* [Mäkinen and Navarro 2005] has been introduced to achieve k -th order compression by applying *run-length compression* to T^{bwt} prior to building a wavelet tree on it. The BWT generates long runs of identical symbols on compressible texts, which makes the RLFM an interesting alternative in practice. The price is that the mappings from the original to the run-length compressed positions slow down the query operations a bit, in comparison to the SSA.

3.3 The Compressed Suffix Array (CSA)

The compressed suffix array (CSA) was not originally a self-index, and required $O(n \log \sigma)$ bits of space [Grossi and Vitter 2006]. Sadakane [2003, 2002] then proposed a variant which is a self-index and achieves high-order compression.

The CSA represents the suffix array $A[1, n]$ by a sequence of numbers $\Psi(i)$, such that $A[\Psi(i)] = A[i] + 1$. It is not hard to see [Sadakane 2003] that Ψ is piecewise monotone increasing in the areas of A where the suffixes start with the same symbol. In addition, there are long runs where $\Psi(i + 1) = \Psi(i) + 1$, and these runs can be mapped one-to-one to the runs in T^{bwt} [Navarro and Mäkinen 2007]. These properties permit a compact representation of Ψ and its fast access. Essentially, we differentially encode $\Psi(i) - \Psi(i - 1)$, run-length encode the long runs of 1's occurring over those differences, and for the rest use an encoding favoring small numbers. Absolute samples are stored at regular intervals to permit the efficient decoding of any $\Psi(i)$. The sampling rate (hereafter denoted by s_Ψ) gives a space/time tradeoff for accessing and storing Ψ . In [Sadakane 2003] it is shown that the index requires $O(nH_0(T) + n \log \log \sigma)$ bits of space. The analysis has been then improved in [Navarro and Mäkinen 2007] to $nH_k(T) + O(n \log \log \sigma)$ for any $k \leq \alpha \log_\sigma n$ and constant $0 < \alpha < 1$.

Counting. The original CSA [Sadakane 2003] used the classical binary searching to count the number of pattern occurrences in T . The actual implementation, proposed in Sadakane [2002], uses backward searching (Section 2.2): Ψ is used to obtain $\langle sp_i, ep_i \rangle$ from $\langle sp_{i+1}, ep_{i+1} \rangle$ in $O(\log n)$ time, for a total of $O(m \log n)$ counting time. Precisely, let $A[sp_i, ep_i]$ be the range of suffixes $A[j]$ that start with p_i and such that $A[j] + 1 (= A[\Psi(j)])$ starts with $P_{i+1, m}$. The former is equivalent to the condition $[sp_i, ep_i] \subseteq [C[p_i] + 1, C[p_i + 1]]$. The latter is equivalent to saying that $sp_{i+1} \leq \Psi(j) \leq ep_{i+1}$. Since $\Psi(i)$ is monotonically increasing in the range $C[p_i] < j \leq C[p_i + 1]$ (since the first characters of suffixes in $A[sp_i, ep_i]$ are the same), we can binary search this interval to find the range $[sp_i, ep_i]$. Figure 3 shows the pseudocode for counting using the CSA.

Locating. Locating is similar to the FM-index, in that the suffix array is sampled at regular intervals of size s_A . However, instead of using the LF-mapping to traverse the text backwards, this time we use Ψ to traverse the text forward, given that $A[\Psi(i)] = A[i] + 1$. This points out an interesting duality between the

```

Algorithm CSA-count( $P_{1,m}$ )
 $i \leftarrow m$ ,  $sp \leftarrow 1$ ,  $ep \leftarrow n$ ;
while ( $(sp \leq ep)$  and ( $i \geq 1$ )) do
     $c \leftarrow p_i$ ;
     $\langle sp, ep \rangle \leftarrow \langle \min, \max \rangle \{j \in [C[c] + 1, C[c + 1]], \Psi(j) \in [sp, ep]\}$ ;
     $i \leftarrow i - 1$ ;
if ( $ep < sp$ ) then return “no occurrences of  $P$ ” else return  $\langle sp, ep \rangle$ ;

```

Fig. 3. Algorithm to get the interval $A[sp, ep]$ prefixed by P , using the CSA. The $\langle \min, \max \rangle$ interval is obtained via binary search.

FM-index and the CSA. Yet, there is a fundamental difference: function $LF(\cdot)$ is implicitly stored and calculated on the fly over T^{bwt} , while function $\Psi(\cdot)$ is explicitly stored. The way these functions are calculated/stored makes the CSA a better alternative for large alphabets.

Extracting. Given C and Ψ , we can obtain $T_{A[i],n}$ symbolwise from i , as follows. The first symbol of the suffix pointed to by $A[i]$, namely $t_{A[i]}$, is the character c such that $C[c] < i \leq C[c + 1]$, because all the suffixes $A[C[c] + 1], \dots, A[C[c + 1]]$ start with symbol c . Now, to obtain the next symbol, $t_{A[i]+1}$, we compute $i' = \Psi(i)$ and use the same procedure above to obtain $t_{A[i']} = t_{A[i]+1}$, and so on. The binary search in C can be avoided by representing it as a bit vector $D[1, n]$ such that $D[C[c]] = 1$, thus $c = rank_1(D, i)$.

Now, given a text substring $T_{l,r}$ to extract, we must first find the i such that $l = A[i]$ and then we can apply the procedure above. Again, we sample the text at regular intervals by storing the i values such that $A[i]$ is a multiple of s_A . To extract $T_{l,r}$ we actually extract $T_{\lfloor l/s_A \rfloor \cdot s_A, r}$, so as to start from the preceding sampled position. This takes $s_A + r - l + 1$ applications of Ψ .

3.4 The Lempel-Ziv Index

The *Lempel-Ziv index* (*LZ-index*) is a compressed self-index based on a Lempel-Ziv partitioning of the text. There are several members of this family [Navarro 2004; Arroyuelo et al. 2006; Ferragina and Manzini 2005], we focus on the version described in [Navarro 2004; Arroyuelo et al. 2006] and available in the Pizza&Chili site. This index uses LZ78 parsing [Ziv and Lempel 1978] to generate a partitioning of $T_{1,n}$ into n' phrases, $T = Z_1, \dots, Z_{n'}$. These phrases are all different, and each phrase Z_i is formed by appending a single symbol to a previous phrase Z_j , $j < i$ (except for a virtual empty phrase Z_0). Since it holds $Z_i = Z_j \cdot c$, for some $j < i$ and $c \in \Sigma$, the set is prefix-closed. We can then build a trie on these phrases, called LZ78-trie, which consists of n' nodes, one per phrase.

The original LZ-index [Navarro 2004] is formed by (1) the LZ78 trie; (2) a trie formed with the reverse phrases Z_i^r , called the reverse trie; (3) a mapping from phrase identifiers i to the LZ78 trie node that represents Z_i ; and (4) a similar mapping to Z_i^r in the reverse phrases. The tree shapes in (1) and (2) are represented using parentheses and the encoding proposed in Munro and Raman [1997] so that they take $O(n')$ bits and constant time to support various tree navigation operations. Yet, we must also store the phrase identifier in

each trie node, which accounts for the bulk of the space for the tries. Overall, we have $4n' \log n'$ bits of space, which can be bounded by $4nH_k(T) + o(n \log \sigma)$ for $k = o(\log_\sigma n)$ [Navarro and Mäkinen 2007]. This can be reduced to $(2 + \epsilon)nH_k(T) + o(n \log \sigma)$ by noticing that the mapping (3) is essentially the inverse permutation of the sequence of phrase identifiers in (1), and similarly (4) with (2) [Arroyuelo and Navarro 2008]. It is possible to represent a permutation and its inverse using $(1 + \epsilon)n' \log n'$ bits of space and access the inverse permutation in $O(1/\epsilon)$ time [Munro et al. 2003].

An occurrence of P in T can be found according to one of the following situations:

- (1) P lies within a phrase Z_i . Unless the occurrence is a suffix of Z_i , since $Z_i = Z_j \cdot c$, P also appears within Z_j , which is the parent of Z_i in the LZ78 trie. A search for P^r in the reverse trie finds all the phrases that have P as a suffix. Then the node mapping permits, from the phrase identifiers stored in the reverse trie, to reach their corresponding LZ78 nodes. All the subtrees of those nodes are occurrences.
- (2) P spans two consecutive phrases. This means that, for some j , $P_{1,j}$ is a suffix of some Z_i and $P_{j+1,m}$ is a prefix of Z_{i+1} . For each j , we search for $P_{1,j}^r$ in the reverse trie and $P_{j+1,m}$ in the LZ78 trie, choosing the smaller subtree of the two nodes we arrived at. If we choose the descendants of the reverse trie node for $P_{1,j}^r$, then for each phrase identifier i that descends from the node, we check whether $i + 1$ descends from the node that corresponds to $P_{j+1,m}$ in the LZ78 trie. This can be done in constant time by comparing preorder numbers.
- (3) P spans three or more nodes. This implies that some phrase is completely contained in P , and since all phrases are different, there are only $O(m^2)$ different phrases to check, one per substring of P . Those are essentially verified one by one.

Notice that the LZ-index carries out counting and locating simultaneously, which renders the LZ-index not competitive for counting alone. Extracting text is done by traversing the LZ78 paths upwards from the desired phrases, and then using mapping (3) to continue with the previous or next phrases. The LZ-index is very competitive for locating and extracting.

3.5 Novel Implementations

We introduce two novel compressed index implementations in this paper. Both are variants of the FM-index family. The first one is interesting because it is a re-engineering of the first reported implementation of a self-index [Ferragina and Manzini 2001]. The second is relevant because it implements the self-index offering the best current theoretical space/time guarantees. It is fortunate, as it does not always happen, that theory and practice marry well and this second index is also relevant in the *practical* space/time tradeoff map.

3.5.1 The FMI-2. As the original FM-index [Ferragina and Manzini 2001], the *FMI-2* adopts a two-level bucketing scheme for implementing efficient *rank*

and *access* operations onto T^{bwt} . In detail, string T^{bwt} is partitioned into *buckets* and *superbuckets*: a bucket consists of lb symbols, a superbucket consists of lsb buckets. Additionally, the FMI-2 maintains two tables: Table T_{sb} stores, for each superbucket and for each symbol c , the number of occurrences of c before that superbucket in T^{bwt} ; table T_b stores, for each bucket and for each symbol c , the number of occurrences of c before that bucket and up to the beginning of its superbucket. In other words, T_{sb} stores the value of the ranking function up to the beginning of superbuckets; whereas T_b stores the ranking function up to the beginning of buckets and *relative* to their enclosing superbuckets. Finally, every bucket is individually compressed using the sequence of zero-order compressors: MTF, RLE, Huffman (as in bzip2). This compression strategy does not guarantee that the space of FMI-2 is bounded by the k th order entropy of T . Nevertheless, the practical performance is close to the one achievable by the best known compressors, and can be traded by tuning parameters lb and lsb .

The main difference between the original FM-index and the novel FMI-2 lies in the strategy adopted to select the rows/positions of T which are explicitly stored. The FMI-2 marks logically and uniformly the text T by adding a special symbol every s_A symbols of the original text. This way, all of the M 's rows that start with that special symbol are contiguous, and thus their positions can be stored and accessed easily.

The count algorithm is essentially a backward search (Algorithm 1), modified to take into account the presence of special symbols added to the indexed text. To search for a pattern $P_{1,p}$, the FMI-2 actually searches for $\min\{p - 1, s_A\}$ patterns obtained by inserting the special symbols in P at each s_A -th position, and searches for the pattern P itself. This search is implemented *in parallel* over all patterns above by exploiting the fact that, at any step i , we have to search either for P_{p-i} or for the special symbol. As a result, the overall search cost is quadratic in the pattern length, and the output is now a set of at most p ranges of rows.

Therefore, the FMI-2 is slower in counting than the original FM-index, but locating is faster, and this is crucial because this latter operation is usually the bottleneck of compressed indexes. Indeed, the locate algorithm proceeds for at most s_A phases. Let S_0 be the range of rows to be located, eventually identified via a count operation. At a generic phase k , S_k contains the rows that may be reached in k backward steps from the rows in S_0 . S_k consists of a *set* of ranges of rows, rather than a single range. To maintain the invariant, the algorithm picks up a range of S_k , say $[a, b]$, and determines the $z \leq |\Sigma|$ distinct symbols that occur in the substring $T_{a,b}^{bwt}$ via two bucket scans and some accesses to tables T_{sb} and T_b . Then, it executes z backward steps, one per such symbols, thus determining z new ranges of rows (to be inserted in S_{k+1}) which are at distance $k + 1$ from the rows in S_0 . The algorithm cycles over all ranges of S_k to form the new set S_{k+1} . Notice that if the rows of a range start with the special symbol, their positions in the indexed text are explicitly stored, and can be accessed in constant time. Then, the position of the corresponding rows in S_0 can be inferred by summing k to those values. Notice that this range can be dropped from S_k . After no more than s_A phases, the set S_k will be empty.

3.5.2 The Alphabet-Friendly FM-index. The *Alphabet-Friendly FM-index (AF-index)* [Ferragina et al. 2007] resorts to the definition of k -th order entropy in Eq. (2), by encoding each substring w_T up to its zero-order entropy. Since all the w_T are contiguous in T^{bwt} (regardless of which k value we are considering), it suffices to split T^{bwt} into blocks given by the k -th order contexts, for any desired k , and to use a Huffman-shaped wavelet tree (see Section 2.3) to represent each such block. In addition, we need all $rank_c$ values precomputed for every block beginning, as the local wavelet trees can only answer $rank_c$ within their blocks. In total, this achieves $nH_k(T) + o(n \log \sigma)$ bits, for moderate and fixed $k \leq \alpha \log_\sigma n$ and $0 < \alpha < 1$. Actually the AF-index does better, by splitting T^{bwt} in an *optimal way*, thus guaranteeing that the space bound above holds simultaneously for every k . This is done by resorting to the idea of *compression boosting* [Ferragina et al. 2005].

The compression booster finds the optimal partitioning of T^{bwt} into t nonempty blocks, s_1, \dots, s_t , assuming that each block s_j will be represented using $|s_j|H_0(s_j) + f(|s_j|)$ bits of space, where $f(\cdot)$ is a nondecreasing concave function supplied as a parameter. Given that the partition is optimal, it can be shown that the resulting space is upper bounded by $nH_k + \sigma^k f(n/\sigma^k)$ bits *simultaneously for every k* . That is, the index is not built for any specific k .

As explained, the AF-index represents each block s_j by means of a Huffman-shaped wavelet tree wt_j , which will take at most $|s_j|(H_0(s_j) + 1) + \sigma \log n$ bits. The last term accounts for the storage of the Huffman code. In addition, for each block j , we store an array $C_j[c]$, which tells the $rank_c$ values up to block j . This accounts for other $\sigma \log n$ bits per block. Finally, we need a bitmap $R[1, n]$ indicating the starting positions of the t blocks in T^{bwt} . Overall, the formula giving the excess of storage over the entropy for block j is $f(|s_j|) = 2|s_j| + 2\sigma \log n$.

To carry out any operation at position i , we start by computing the block where position i lies, $j = rank_1(R, i)$, and the starting position of that block, $i' = select_1(R, j)$. (This tells the position of the j -th 1 in R . As it is a sort of inverse of $rank$, it is computed by binary search over $rank$ values.) Hence $T^{bwt}[i] = s_j[i'']$, where $i'' = i - i' + 1$ is the offset of i within block j . Then, the different operations are carried out as follows.

- For counting, we use the algorithm of Figure 1. In this case, we have $rank_c(T^{bwt}, i) = C_j[c] + rank_c(s_j, i'')$, where the latter is computed using the wavelet tree wt_j of s_j .
- For locating, we use the algorithm of Figure 2. In this case, we have $c = T^{bwt}[i] = s_j[i'']$. To compute $s_j[i'']$, we also use the wavelet tree wt_j of s_j .
- For extracting, we proceed similarly as for locating, as explained in Section 3.1.

As a final twist, R is actually stored using $2\sqrt{nt}$ rather than n bits. We cut R into \sqrt{nt} chunks of length $\sqrt{n/t}$. There are at most t chunks which are not all zeros. Concatenating them all requires only \sqrt{nt} bits. A second bitmap of

length \sqrt{nt} indicates whether each chunk is all-zero or not. It is easy to translate rank/select operations into this representation.

4. THE PIZZA&CHILI SITE

The *Pizza&Chili* site has two mirrors: one in Chile (<http://pizzachili.dcc.uchile.cl>) and one in Italy (<http://pizzachili.di.unipi.it>). Its ultimate goal is to push towards the technology transfer of this fascinating algorithmic technology lying at the crossing point of data compression and data structure design. In order to achieve this goal, the *Pizza&Chili* site offers publicly available and highly tuned implementations of various compressed indexes. The implementations follow a suitable C/C++ API of functions which should, in our intention, allow any programmer to plug easily the provided compressed indexes within his/her own software. The site also offers a collection of texts for experimenting with and validating the compressed indexes. In detail, it offers three kinds of material:

- A set of compressed indexes which are able to support the search functionalities of classical full-text indexes (e.g., substring searches), but requiring succinct space occupancy and offering, in addition, some text access operations that make them useful within text retrieval and data mining software systems.
- A set of text collections of various types and sizes useful to test experimentally the available (or new) compressed indexes. The text collections have been selected to form a representative sample of different applications where indexed text searching might be useful. The size of these texts is large enough to stress the impact of data compression over memory usage and CPU performance. The goal of experimenting with this testbed is to conclude whether, or not, compressed indexing is beneficial over uncompressed indexing approaches, like suffix trees and suffix arrays. And, in case it is beneficial, which compressed index is preferable according to the various applicative scenarios represented by the testbed.
- Additional material useful to experiment with compressed indexes, such as scripts for their automatic validation and efficiency test over the available text collections.

The *Pizza&Chili* site hopes to mimic the success and impact of other initiatives, such as *data-compression.info* and the *Calgary* and *Canterbury* corpora, just to cite a few. Actually, the *Pizza&Chili* site is a mix, as it offers both software and testbeds. Several people have already contributed to make this site work and, hopefully, many more will contribute to turn it into a reference for all researchers and software developers interested in experimenting and developing the compressed-indexing technology. The API we propose is thus intended to ease the deployment of this technology in real software systems, and to provide a reference for any researcher who wishes to contribute to the *Pizza&Chili* repository with his/her new compressed index.

4.1 Indexes

The *Pizza&Chili* site provides several index implementations, all adhering to a common API. All indexes, except CSA and LZ-index, are built through the deep-shallow algorithm of Manzini and Ferragina [2004] which constructs the Suffix Array data structure using little extra space and is fast in practice.

- The Suffix Array [Manber and Myers 1993] is a plain implementation of the classical index (see Section 2.1), using either $n \log n$ bits of space or simply n computer integers, depending on the version. This was implemented by Rodrigo González.
- The SSA [Ferragina et al. 2007; Mäkinen and Navarro 2005] uses a Huffman-based wavelet tree over the string T^{bwt} (Section 3.1). It achieves zero-order entropy in space with little extra overhead and striking simplicity. It was implemented by Veli Mäkinen and Rodrigo González.
- The AF-index [Ferragina et al. 2007] combines compression boosting [Ferragina et al. 2005] with the above wavelet tree data structure (Section 3.5.2). It achieves high-order compression, at the cost of being more complex than SSA. It was implemented by Rodrigo González.
- The RLFM [Mäkinen and Navarro 2005] is an improvement over the SSA (Section 3.1), which exploits the equal-letter runs of the BWT to achieve k -th order compression, and in addition uses a Huffman-shaped wavelet tree. It is slightly larger than the AF-index. It was implemented by Veli Mäkinen and Rodrigo González.
- The FMI-2 (Section 3.5.1) is an engineered implementation of the original FM-index [Ferragina and Manzini 2001], where a different sampling strategy is designed in order to improve the performance of the locating operation. It was implemented by Paolo Ferragina and Rossano Venturini.
- The CSA [Sadakane 2003, 2002] is the variant using backward search (Section 3.3). It achieves high-order compression and is robust for large alphabets. It was implemented by Kunihiro Sadakane and adapted by Rodrigo González to adhere the API of the *Pizza&Chili* site. To construct the suffix array, it uses the *qsufsort* by Larsson and Sadakane [2007].
- The LZ-index [Navarro 2004; Arroyuelo et al. 2006] is a compressed index based on LZ78 compression (Section 3.4), implemented by Diego Arroyuelo and Gonzalo Navarro. It achieves high-order compression, yet with relatively large constants. It is slow for counting but very competitive for locating and extracting.

These implementations support any byte-based alphabet of size up to 255 symbols: one symbol is automatically reserved by the indexes as the terminator “\$”.

In the following two sections, we explain the implementation of FMI2 and AF-index.

4.2 Texts

We have chosen the texts forming the *Pizza&Chili* collection by following three basic considerations. First, we wished to cover a representative set of application areas where the problem of full-text indexing might be relevant, and for each of them we selected texts freely available on the Web. Second, we aimed at having one file per text type in order to avoid unreadable tables of many results. Third, we have chosen the size of the texts to be large enough in order to make indexing relevant and compression apparent. These are the current collections provided in the repository:

- `dna` (DNA sequences). This file contains bare DNA sequences without descriptions, separated by `newline`, obtained from files available at the Gutenberg Project site: namely, from *01hgp10* to *21hgp10*, plus *0xhgp10* and *0yhgp10*. Each of the four DNA bases is coded as an uppercase letter A, G, C, T, and there are a few occurrences of other special symbols.
- `english` (English texts). This file is the concatenation of English texts selected from the collections *etext02*—*etext05* available at the Gutenberg Project site. We deleted the headers related to the project so as to leave just the real text.
- `pitches` (MIDI pitch values). This file is a sequence of pitch values (bytes whose values are in the range 0-127, plus a few extra special values) obtained from a myriad of MIDI files freely available on the Internet. The MIDI files were converted into the IRP format by using the `semex` tool by Lemström and Perttu [2000]. This is a human-readable tuple format, where the 5th column is the pitch value. The pitch values were coded in one byte each and concatenated all together.
- `proteins` (protein sequences). This file contains bare protein sequences without descriptions, separated by `newline`, obtained from the Swissprot database (`ftp.ebi.ac.uk/pub/databases/swissprot/`). Each of the 20 amino acids is coded as an uppercase letter.
- `sources` (source program code). This file is formed by C/Java source codes obtained by concatenating all the `.c`, `.h`, `.C` and `.java` files of the *linux-2.6.11.6* (`ftp.kernel.org`) and *gcc-4.0.0* (`ftp.gnu.org`) distributions.
- `xml` (structured text). This file is in XML format and provides bibliographic information on major computer science journals and proceedings. It was downloaded from the DBLP archive at `dblp.uni-trier.de`.

For the experiments, we have limited the short file pitches to its initial 50 MB, whereas all the other long files have been cut down to their initial 200 MB. We show now some statistics on those files. These statistics and the tools used to compute them are also available at the *Pizza&Chili* site.

Table I summarizes some general characteristics of the selected files. The last column, inverse match probability, is the reciprocal of the probability of matching between two randomly chosen text symbols. This may be considered as a measure of the *effective* alphabet size—indeed, on a uniformly distributed text, it would be precisely the alphabet size.

Table I. General statistics for our indexed texts

Text	Size (MB)	Alphabet size	Inv. match prob.
dna	200	16	3.86
english	200	225	15.12
pitches	50	133	40.07
proteins	200	25	16.90
sources	200	230	24.81
xml	200	96	28.65

Table II. Ideal compressibility of our indexed texts. For every k -th order model, with $0 \leq k \leq 4$, we report the number of distinct contexts of length k , and the empirical entropy H_k , measured as number of bits per input symbol

Text	$\log \sigma$	H_0	1st order		2nd order		3rd order		4th order	
			H_1	#	H_2	#	H_3	#	H_4	#
dna	4.000	1.974	1.930	16	1.920	152	1.916	683	1.910	2222
english	7.814	4.525	3.620	225	2.948	10829	2.422	102666	2.063	589230
pitches	7.055	5.633	4.734	133	4.139	10946	3.457	345078	2.334	3845792
proteins	4.644	4.201	4.178	25	4.156	607	4.066	11607	3.826	224132
sources	7.845	5.465	4.077	230	3.102	9525	2.337	253831	1.852	1719387
xml	6.585	5.257	3.480	96	2.170	7049	1.434	141736	1.045	907678

Table III. Real compressibility of our indexed texts, as achieved by the best-known compressors: gzip (option -9), bzip2 (option -9), and PPMDi (option -1 9)

Text	H_4	gzip	bzip2	PPMDi
dna	1.910	2.162	2.076	1.943
english	2.063	3.011	2.246	1.957
pitches	2.334	2.448	2.890	2.439
proteins	3.826	3.721	3.584	3.276
sources	1.852	1.790	1.493	1.016
xml	1.045	1.369	0.908	0.745

Table II provides some information about the compressibility of the texts by reporting the value of H_k for $0 \leq k \leq 4$, measured as number of bits per input symbol. As a comparison on the *real* compressibility of these texts, Table II shows the performance of three well-known compressors (sources available in the site): gzip (Lempel-Ziv-based compressor), bzip2 (BWT-based compressor), and PPMDi (k -th order modeling compressor). Notice that, as k grows, the value of H_k decreases but the size of the *dictionary* of length- k contexts grows significantly, eventually approaching the size of the text to be compressed. Typical values of k for PPMDi are around 5 or 6. It is interesting to note in Table III that the compression ratios achievable by the tested compressors may be superior to H_4 , because they use (explicitly or implicitly) longer contexts.

5. EXPERIMENTAL RESULTS

In this section, we report experimental results from a subset of the compressed indexes available at the *Pizza&Chili* site. We restricted our experiments to a

Table IV. Parameters used for the different indexes in our experiments.
The cases of multiple values correspond to space/time tradeoff curves

Index	Count	Locate / Extract
AF-index	–	$s_A = \{4, 16, 32, 64, 128, 256\}$
CSA	$s_\Psi = \{128\}$	$s_A = \{4, 16, 32, 64, 128, 256\}; s_\Psi = \{128\}$
LZ-index	$\epsilon = \{\frac{1}{4}\}$	$\epsilon = \{1, \frac{1}{2}, \frac{1}{3}, \frac{1}{4}, \frac{1}{5}, \frac{1}{10}, \frac{1}{20}\}$
SSA	–	$s_A = \{4, 16, 32, 64, 128, 256\}$

few indexes: Succinct Suffix Array (version SSA_v2 in *Pizza&Chili*), Alphabet-Friendly FM-index (version AF-index_v2 in *Pizza&Chili*), Compressed Suffix Array (CSA in *Pizza&Chili*), and LZ-index (version LZ-index4 in *Pizza&Chili*), because they are the best representatives of the three classes of compressed indexes we discussed in Section 3. This small number will provide us with a succinct, yet significant, picture of the performance of all known compressed indexes [Navarro and Mäkinen 2007].

There is no need to say that further algorithmic engineering of the indexes experimented in this article, as well of the other indexes available in the *Pizza&Chili* site, could possibly change the charts and tables shown below. However, we believe that the overall conclusions drawn from our experiments should not change significantly, unless new algorithmic ideas are devised for them. Indeed, the following list of experimental results has a twofold goal: on one hand, to quantify the space and time performance of compressed indexes over real datasets, and on the other hand, to motivate further algorithmic research by highlighting the limitations of the present indexes and their implementations.

Table IV shows the parameters used to construct the indexes in our experiments. The SSA and AF-index have a sampling rate parameter s_A that trades locating and extracting time for space. More precisely, they need $O(s_A)$ accesses to the wavelet tree for locating, and $O(s_A + r - l + 1)$ accesses to extract $T_{l,r}$, in exchange for $\frac{n \log n}{s_A}$ additional bits of space. We can remove those structures if we are only interested in counting.

The CSA has two space/time tradeoffs. A first one, s_Ψ , governs the access time to Ψ , which is $O(s_\Psi)$ in exchange for $\frac{n \log n}{s_\Psi}$ bits of space required by the samples. The second, s_A , affects locating and extracting time just as above. For pure counting we can remove the sampling related to s_A , whereas for locating the best is to use the default value (given by Sadakane) of $s_\Psi = 128$. The best choice for extracting is less clear, as it depends on the length of the substring to extract.

Finally, the LZ-index has one parameter ϵ which trades counting/locating time for space occupancy: The cost per candidate occurrence is multiplied by $\frac{1}{\epsilon}$, and the additional space is $2\epsilon n H_k(T)$ bits. No structure can be removed in the case of counting, but space can be halved if the extract operation is the only one needed (just remove the reverse trie).

All the experiments were executed on a 2.6 GHz Pentium 4, with 1.5 GB of main memory, and running Fedora Linux. The searching and building algorithms for all compressed indexes were coded in C/C++ and compiled with gcc or g++ version 4.0.2.

Table V. Time and peak of main memory usage required to build the various indexes over the 200 MB file `english`. The indexes are built using the default value for the locate tradeoff (that is, $s_A = 64$ for AF-index and SSA; $s_A = 64$ and $s_\psi = 128$ for CSA; and $\epsilon = \frac{1}{4}$ for the LZ-index)

Index	Build Time (sec)	Main Memory Usage (MB)
AF-index	772	1,751
CSA	233	1,801
LZ-index	198	1,037
SSA	217	1,251

5.1 Construction

Table V shows construction time and peak of memory usage during construction for one collection, namely `english`, as all the others give roughly similar results. In order to fairly evaluate the time and space consumption of the algorithm needed to construct the suffix array underlying the CSA implementation, we replaced the construction algorithm proposed by Larsson and Sadakane [2007] and used in the original implementation by Sadakane (see Section 4.1), with the faster algorithm proposed by [Manzini and Ferragina 2004] and used by all other compressed SA-based indexes.³ The bulk of the time of SSA and CSA is that of suffix array construction (prior to its compression). The AF-index takes much more time because it needs to run the compression boosting algorithm over the suffix array. The LZ-index spends most of the time in parsing the text and creating the LZ78 and reverse tries. In all cases construction times are practical, 1 to 4 sec/MB with our machine.

The memory usage might be problematic, as it is 5 to 9 times the text size. Albeit the final index is small, one needs much memory to build it first.⁴ This is a problem of compressed indexes, which is attracting a lot of practical and theoretical research [Lam et al. 2002; Arroyuelo and Navarro 2005; Hon et al. 2003; Mäkinen and Navarro 2008a].

Note we have given construction time and space for just one parameter setting per index. The reason is that time and space for construction is mostly insensitive to these parameters. They imply sparser or denser sampling of suffix arrays and permutations, but those sampling times are negligible compared to suffix array and trie construction times, and sampling does not affect peak memory consumption either.

5.2 Counting

We searched for 50,000 patterns of length $m = 20$, randomly chosen from the indexed texts. The average counting time was then divided by m to display counting time per symbol. This is appropriate because the counting time of the indexes is linear in m , and 20 is sufficiently large to blur small constant

³We note that this change was done just for timing measurements, the code available on the Pizza&Chili site still uses Larsson-Sadakane’s algorithm because this was the choice of the CSA’s implementor.

⁴In particular, this limited us to indexing up to 200 MB of text in our machine.

Table VI. Experiments on the counting of pattern occurrences. Time is measured in microseconds per pattern symbol. The space usage is expressed as a fraction of the original text size. We put in boldface those results that lie within 10% of the best space/time tradeoffs

Text	SSA		AF-index		CSA		LZ-index		plain SA	
	Time	Space	Time	Space	Time	Space	Time	Space	Time	Space
dna	0.956	0.29	1.914	0.28	5.220	0.46	43.896	0.93	0.542	5
english	2.147	0.60	2.694	0.42	4.758	0.44	68.774	1.27	0.512	5
pitches	2.195	0.74	2.921	0.66	3.423	0.63	55.314	1.95	0.363	5
proteins	1.905	0.56	3.082	0.56	6.477	0.67	47.030	1.81	0.479	5
sources	2.635	0.72	2.946	0.49	4.345	0.38	162.444	1.27	0.499	5
xml	2.764	0.69	2.256	0.34	4.321	0.29	306.711	0.71	0.605	5

overheads. The exception is the LZ-index, whose counting time is superlinear in m , and not competitive at all for this task.

Table VI shows the results on this test. The space of the SSA, AF-index, and CSA does not include what is necessary for locating and extracting. We can see that, as expected, the AF-index is always smaller than the SSA, yet they are rather close on dna and proteins (where the zero-order entropy is not much larger than higher-order entropies). The space usages of the AF-index and the CSA are similar and usually the best, albeit the CSA predictably loses in counting time on smaller alphabets (dna, proteins), due to its $O(m \log n)$ rather than $O(m \log \sigma)$ complexity. The CSA takes advantage of larger alphabets with good high-order entropies (sources, xml), a combination where the AF-index, despite of its name, profits less. Note that the space performance of the CSA on those texts confirms that its space occupancy is related to the high-order entropy.

With respect to time, the SSA is usually the fastest thanks to its simplicity. Sometimes the AF-index gets close and it is actually faster on xml. The CSA is rarely competitive for counting, and the LZ-index is well out of bounds for this experiment. Notice that the plain suffix array (last column in Table VI) is 2 to 6 times faster than any compressed index, but its space occupancy can be up to 18 times larger.

5.3 Locate

We locate sufficient random patterns of length 5 to obtain a total of 2 to 3 million occurrences per text (see Table VII). This way we are able to evaluate the average cost of a single locate operation, by making the impact of the counting cost negligible. Figure 4 reports the time/space tradeoffs achieved by the different indexes for the locate operation.

We remark that the implemented indexes include the sampling mechanism for locate and extract as a single module, and therefore the space for both operations is included in these plots. Therefore, the space could be reduced if we only wished to locate. However, as extracting snippets of pattern occurrences is an essential functionality of a self-index, we consider that the space for efficient extraction should always be included.⁵

⁵Of course, we could have a sparser sampling for extraction, but we did not want to complicate the evaluation more than necessary.

Table VII. Number of searched patterns of length 5 and total number of located occurrences

Text	# patterns	# occurrences
dna	10	2,491,410
english	100	2,969,876
pitches	200	2,117,347
proteins	3,500	2,259,125
sources	50	2,130,626
xml	20	2,831,462

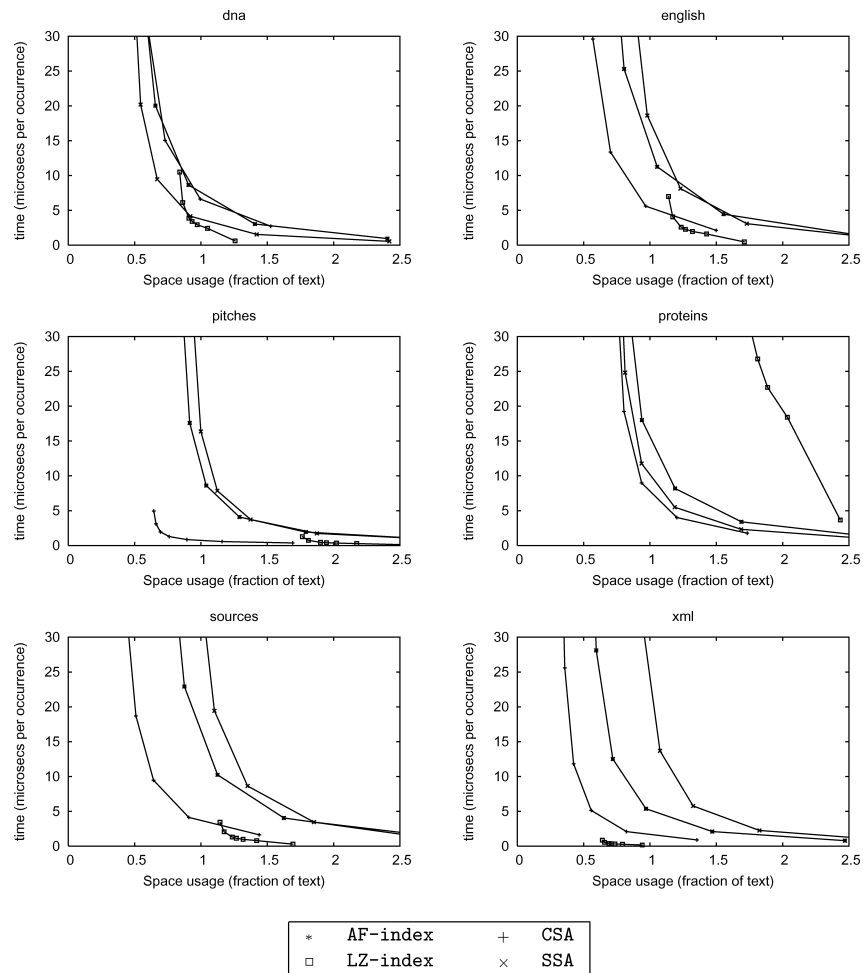


Fig. 4. Space-time tradeoffs for locating occurrences of patterns of length 5.

The comparison shows that usually CSA can achieve the best results with minimum space, except on *dna* where the SSA performs better as expected (given its query time complexity, (see Section 3.2), and on *proteins* for which the suffix-array-based indexes perform similarly (and the LZ-index does much worse). The

Table VIII. Locate time required by plain SA in microseconds per occurrence, with $m = 5$. We recall that this implementation requires 5 bytes per indexed symbol

	dna	english	pitches	proteins	sources	xml
plain SA	0.005	0.005	0.006	0.007	0.007	0.006

CSA is also the most attractive alternative if we fix that the space of the index should be equal to that of the text (recall that it includes the text), dna and xml being the exceptions, where the LZ-index is superior.

The LZ-index can be much faster than the others if one is willing to pay for some extra space. The exceptions are pitches, where the CSA is superior, and proteins, where the LZ-index performs poorly. This may be caused by the large number of patterns that were searched to collect the 2 to 3 million occurrences (see Table VII), as the counting is expensive on the LZ-index.

Table VIII shows the locate time required by an implementation of the classical suffix array: it is between 100 and 1,000 times faster than any compressed index, but always 5 times larger than the indexed text. Unlike counting, where compressed indexes are comparable in time with classical ones, locating is much slower on compressed indexes. This comes from the fact that each locate operation (except on the LZ-index) requires to perform several random memory accesses, depending on the sampling step. In contrast, all the occurrences are contiguous in a classical suffix array. As a result, the compressed indexes are currently very efficient in case of selective queries, but traditional indexes become more effective when locating many occurrences. This fact has triggered recent research activity on this subject (e.g., González and Navarro [2007]) but a deeper understanding on index performance on hierarchical memories is still needed.

5.4 Extract

We extracted substrings of length 512 from random text positions, for a total of 5 MB of extracted text. Figure 5 reports the time/space tradeoffs achieved by the tested indexes. We still include both space to locate and extract, but we note that the sampling step affects only the time to reach the text segment to extract from the closest sample, and afterwards the time is independent of the sampling. We chose length 512 to smooth out the effect of this sampling.

The comparison shows that, for extraction purposes, the CSA is better for sources and xml, whereas the SSA is better on dna and proteins. On english and pitches both are rather similar, albeit the CSA is able to operate on reduced space. On the other hand, the LZ-index is much faster than the others on xml, english and sources, if one is willing to pay some additional space.⁶

It is difficult to compare these times with those of a classical index, because the latter has the text readily available. Nevertheless, we note that the times are rather good: using the same space as the text (and some times up to half the space) for all the functionalities implemented, the compressed indexes are

⁶Actually, the LZ-index is not plotted for pitches and proteins because it needs more than 1.5 times the text size.

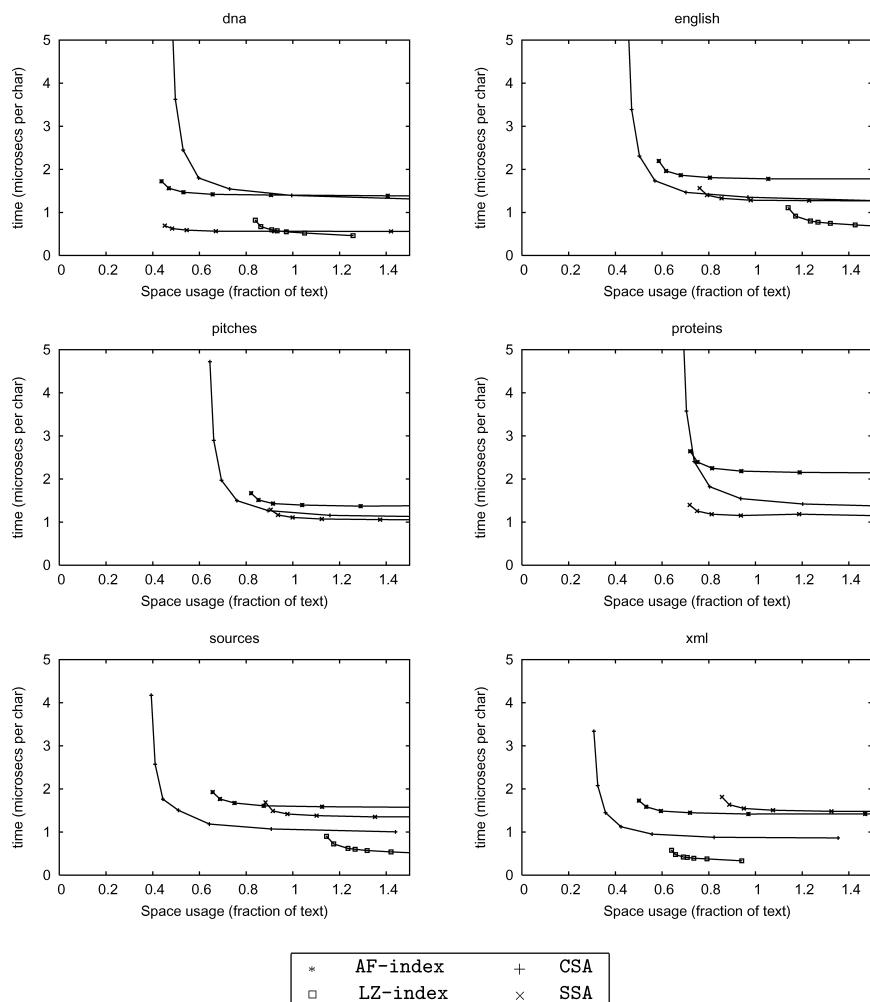


Fig. 5. Space-time tradeoffs for extracting text symbols.

able to extract around 1 MB/sec, from arbitrary positions. This shows that self-indexes are appealing as compressed-storage schemes with the support of random accesses for snippet extraction.

6. CONCLUSION AND FUTURE WORK

In this article, we have addressed the design, implementation and testing of the new algorithmic technology called *compressed text indexing*. We have explained the main principles used by those indexes in practice, and presented the *Pizza&Chili* site, where implementations and testbeds are readily available for use. Table IX summarizes our experimental results by showing the most promising compressed index(es) depending on the text type and task.

For counting, the best indexes are SSA and AF-index. This stems from the fact that they achieve very good zero- or high-order compression of the indexed

Table IX. The most promising indexes given the size and time they obtain for each operation/text

	dna	english	pitches	proteins	sources	xml
count	SSA -	SSA AF-index	AF-index SSA	SSA -	CSA AF-index	AF-index -
locate	LZ-index SSA	CSA LZ-index	CSA -	SSA -	CSA LZ-index	CSA LZ-index
extract	SSA -	CSA LZ-index	CSA -	SSA -	CSA LZ-index	CSA LZ-index

text, while their average counting complexity is $O(m(H_0(T) + 1))$. The SSA has the advantage of a simpler search mechanism, but the AF-index is superior for texts with small high-order entropy (i.e. xml, sources, english). The CSA usually loses because of its $O(m \log n)$ counting complexity.

For locating and extracting, which are LF-computation intensive, the AF-index is hardly better than the simpler SSA because the benefit of a denser sampling does not compensate for the presence of many wavelet trees. The SSA wins for small-alphabet data, like dna and proteins. Conversely, for all other high-order compressible texts the CSA takes over the other approaches. We also notice that the LZ-index is a very competitive choice when extra space is allowed and the texts are highly compressible.

Yet, other novel developments have appeared recently, which already improve these results in some aspects, and are likely to be added to the site soon [González and Navarro 2007; Claude and Navarro 2008]. The ultimate moral is that there is not a clear winner for all text collections, and that this is not to be taken as a static, final result, because the area is developing fast. Nonetheless, our current results provide an *upper bound* on what these compressed indexes can achieve in practice:

Count. We can compress the text within 30% to 50% of its original size, and search for 20,000 to 50,000 patterns of 20 chars each within a second.

Locate. We can compress the text within 40% to 80% of its original size, and locate about 100,000 pattern occurrences per second.

Extract. We can compress the text within 40% to 80% of its original size, and decompress its symbols at a rate of about 1 MB/second.

The above figures show that the compressed full-text indexes are from one (count) to three (locate) orders of magnitudes slower than what one can achieve with a plain suffix array, at the benefit of using up to 18 times less space. This slowdown is due to the fact that search operations in compressed indexes access the memory in a non-local way thus eliciting many cache/IO misses, with a consequent degradation of the overall time performance. Nonetheless compressed indexes achieve a (search/extract) throughput which is significant and may match the efficiency specifications of most software tools which run on a commodity PC.

On the other hand, Puglisi et al. [2006] recently compared several compressed self-indexes with a block-addressing q -gram index. They showed that compressed indexes are always faster on counting, and they are also

faster on locating when queries are selective, namely when the number of retrieved occurrences is less than few thousands. We remark that this result was achieved for inverted lists holding texts in *plain form*, without any compression. In order to be considered a compressed text index, the text should be compressed in a way that permits direct scanning of arbitrary blocks. When compressing general sequences, this is likely to make the search significantly slower [Navarro and Tarhio 2005], but it is nonetheless an interesting topic of future research. For example, besides the obvious semistatic and blockwise adaptive classical compression methods, there are recent potentially practical schemes allowing high-order compression of a sequence while warranting constant-time access to any $O(\log n)$ -bits sized subsequence [González and Navarro 2006; Ferragina and Venturini 2007b]. Also, we observe that such a scheme might as well be implemented by using the *extract* functionality of any of the compressed (self-)indexes described in this article.

It is also interesting that the development of the full-text self-indexing technology is now impacting on natural-language text indexing, where inverted indexes have been for decades the main data structure. Recent research [Brisaboa et al. 2008; Fariña et al. 2008; Brisaboa et al. 2008] shows that word-oriented self-indexes (i.e., where the text is essentially seen as a sequence of words) can successfully compete with inverted indexes, especially when one wishes to use space very close to that of the compressed text (typically 25% to 40% of the original text size).

We hope that this article will spread the use of this novel algorithmic technology in any software that needs to process, store and mine text collections of any size. Why use so much space when squeezing and searching is nowadays simultaneously affordable?

REFERENCES

- ALURU, S., AND KO, P. 2008. *Encyclopedia of Algorithms*. Springer, Chapter on “Lookup Tables, Suffix Trees and Suffix Arrays”.
- ANDERSSON, A. AND NILSSON, S. 1995. Efficient implementation of suffix trees. *Software Practice and Experience* 25, 2, 129–141.
- ARROYUELO, D., AND NAVARRO, G. 2005. Space-efficient construction of LZ-index. In *Proceedings 16th Annual International Symposium on Algorithms and Computation (ISAAC)*. Lecture Notes in Computer Science, vol. 3827. Springer, 1143–1152.
- ARROYUELO, D., AND NAVARRO, G. 2008. Practical approaches to reduce the space requirement of Lempel-Ziv-based compressed text indices. Tech. Rep. TR/DCC-2008-9, Dept. of Computer Science, Univ. of Chile. July.
- ARROYUELO, D., NAVARRO, G., AND SADAKANE, K. 2006. Reducing the space requirement of LZ-index. In *Proceedings 17th Annual Symposium on Combinatorial Pattern Matching (CPM)*. Lecture Notes in Computer Science, vol. 4009. Springer, 319–330.
- BRISABOA, N., FARIÑA, A., LADRA, S., AND NAVARRO, G. 2008. Reorganizing compressed text. In *Proceedings 31st Annual International ACM SIGIR Conference on Research and Development in Information Retrieval (SIGIR)*. ACM Press, 139–146.
- BRISABOA, N., FARIÑA, A., NAVARRO, G., PLACES, A., AND RODRÍGUEZ, E. 2008. Self-indexing natural language. In *Proceedings 15th International Symposium on String Processing and Information Retrieval (SPIRE)*. Lecture Notes in Computer Science. Springer.
- BURROWS, M. AND WHEELER, D. 1994. A block sorting lossless data compression algorithm. Tech. Rep. 124, Digital Equipment Corporation.

- CLAUDE, F. 2008. Compressed data structures for Web graphs. M.S. thesis, Dept. of Computer Science, Univ. of Chile. Also as Tech. Report TR/DCC-2008-12.
- CLAUDE, F. AND NAVARRO, G. 2008. Practical rank/select queries over arbitrary sequences. In *Proceedings 15th International Symposium on String Processing and Information Retrieval (SPIRE)*. Lecture Notes in Computer Science. Springer.
- COLE, R., KOPELOWITZ, T., AND LEWENSTEIN, M. 2006. Suffix trays and suffix trists: Structures for faster text indexing. In *Proceedings 33th International Colloquium on Automata, Languages and Programming (ICALP)*. Lecture Notes in Computer Science, vol. 4051. Springer, 358–369.
- FARIÑA, A., NAVARRO, G., AND PARAMÁ, J. 2008. Word-based statistical compressors as natural language compression boosters. In *Proceedings 18th Data Compression Conference (DCC)*. 162–171.
- FERRAGINA, P., GIANCARLO, R., MANZINI, G., AND SCIORTINO, M. 2005. Boosting textual compression in optimal linear time. *Journal of the ACM* 52, 688–713.
- FERRAGINA, P., LUCCIO, F., MANZINI, G., AND MUTHUKRISHNAN, S. 2005. Structuring labeled trees for optimal succinctness, and beyond. In *Proceedings 46th Annual IEEE Symposium on Foundations of Computer Science (FOCS)*. IEEE Computer Society, 184–196.
- FERRAGINA, P., LUCCIO, F., MANZINI, G., AND MUTHUKRISHNAN, S. 2006. Compressing and searching xml data via two zips. In *Proceedings 15th World Wide Web Conference (WWW)*. 751–760.
- FERRAGINA, P. AND MANZINI, G. 2001. An experimental study of an opportunistic index. In *Proceedings 12th Annual ACM-SIAM Symposium on Discrete Algorithms (SODA)*. 269–278.
- FERRAGINA, P. AND MANZINI, G. 2005. Indexing compressed texts. *Journal of the ACM* 52, 4, 552–581.
- FERRAGINA, P., MANZINI, G., MÄKINEN, V., AND NAVARRO, G. 2007. Compressed representations of sequences and full-text indexes. *ACM Transactions on Algorithms (TALG)* 3, 2, article 20.
- FERRAGINA, P. AND VENTURINI, R. 2007a. Compressed permuterm indexes. In *Proceedings 30th ACM SIGIR Conference on Research and Development in Information Retrieval*. 535–542.
- FERRAGINA, P. AND VENTURINI, R. 2007b. A simple storage scheme for strings achieving entropy bounds. *Theoretical Computer Science* 372, 1, 115–121.
- FOSCHINI, L., GROSSI, R., GUPTA, A., AND VITTER, J. 2006. When indexing equals compression: Experiments with compressing suffix arrays and applications. *ACM Transactions on Algorithms* 2, 4, 611–639.
- GIEGERICH, R., KURTZ, S., AND STOYE, J. 2003. Efficient implementation of lazy suffix trees. *Software Practice and Experience* 33, 11, 1035–1049.
- GONZÁLEZ, R., GRABOWSKI, S., MÄKINEN, V., AND NAVARRO, G. 2005. Practical implementation of rank and select queries. In *Poster Proceedings Volume of 4th Workshop on Efficient and Experimental Algorithms (WEA)*. 27–38.
- GONZÁLEZ, R. AND NAVARRO, G. 2006. Statistical encoding of succinct data structures. In *Proceedings 17th Annual Symposium on Combinatorial Pattern Matching (CPM)*. Lecture Notes in Computer Science, vol. 4009. Springer, 295–306.
- GONZÁLEZ, R. AND NAVARRO, G. 2007. Compressed text indexes with fast locate. In *Proceedings 18th Annual Symposium on Combinatorial Pattern Matching (CPM)*. Lecture Notes in Computer Science, vol. 4580. Springer, 216–227.
- GROSSI, R., GUPTA, A., AND VITTER, J. 2003. High-order entropy-compressed text indexes. In *Proceedings 14th Annual ACM-SIAM Symposium on Discrete Algorithms (SODA)*. 841–850.
- GROSSI, R. AND VITTER, J. 2006. Compressed suffix arrays and suffix trees with applications to text indexing and string matching. *SIAM Journal on Computing* 35, 2, 378–407.
- GUSFIELD, D. 1997. *Algorithms on Strings, Trees and Sequences: Computer Science and Computational Biology*. Cambridge University Press.
- HON, W., SADAKANE, K., AND SUNG, W. 2003. Breaking a time-and-space barrier in constructing full-text indices. In *Proceedings 44th Annual IEEE Symposium on Foundations of Computer Science (FOCS)*. IEEE Computer Society, 251–260.
- JOKINEN, P. AND UKKONEN, E. 1991. Two algorithms for approximate string matching in static texts. In *Proceedings 2nd Annual Symposium on Mathematical Foundations of Computer Science (MFCS)*. Vol. 16. 240–248.

- KÄRKKÄINEN, J. 1995. Suffix cactus: a cross between suffix tree and suffix array. In *Proceedings 6th Annual Symposium on Combinatorial Pattern Matching (CPM)*. Lecture Notes in Computer Science, vol. 937. Springer, 191–204.
- KÄRKKÄINEN, J. AND UKKONEN, E. 1996a. Lempel-Ziv parsing and sublinear-size index structures for string matching. In *Proceedings 3rd South American Workshop on String Processing (WSP)*. Carleton University Press, 141–155.
- KÄRKKÄINEN, J. AND UKKONEN, E. 1996b. Sparse suffix trees. In *Proceedings 2nd Annual International Conference on Computing and Combinatorics (COCOON)*. Lecture Notes in Computer Science, vol. 1090. Springer, 219–230.
- LAM, T.-W., SADAKANE, K., SUNG, W.-K., AND YIU, S.-M. 2002. A space and time efficient algorithm for constructing compressed suffix arrays. In *Proceedings 8th Conference on Computing and Combinatorics (COCOON)*. Lecture Notes in Computer Science, vol. 2387. Springer, 401–410.
- LARSSON, N. J. AND SADAKANE, K. 2007. Faster suffix sorting. *Theoretical Computer Science (TCS)* 387, 3, 258–272.
- LEHTINEN, O., SUTINEN, E., AND TARHIO, J. 1996. Experiments on block indexing. In *Proceedings 3rd South American Workshop on String Processing (WSP)*. Carleton University Press, 183–193.
- LEMSTRÖM, K. AND PERTTU, S. 2000. SEMEX – an efficient music retrieval prototype. In *Proceedings 1st International Symposium on Music Information Retrieval (ISMIR)*.
- MÄKINEN, V. AND NAVARRO, G. 2005. Succinct suffix arrays based on run-length encoding. *Nordic Journal of Computing* 12, 1, 40–66.
- MÄKINEN, V. AND NAVARRO, G. 2008a. Dynamic entropy-compressed sequences and full-text indexes. *ACM Transactions on Algorithms* 4, 3, article 32.
- MÄKINEN, V. AND NAVARRO, G. 2008b. On self-indexing images—image compression with added value. In *Proceedings 18th Data Compression Conference (DCC)*. 422–431.
- MANBER, U. AND MYERS, G. 1993. Suffix arrays: A new method for on-line string searches. *SIAM Journal of Computing* 22, 935–948.
- MANBER, U. AND WU, S. 1994. Glimpse: a tool to search through entire file systems. In *Proceedings of the USENIX Winter 1994 Technical Conference*. USENIX Association, 4–4.
- MANZINI, G. 2001. An analysis of the Burrows-Wheeler transform. *Journal of the ACM* 48, 3, 407–430.
- MANZINI, G. AND FERRAGINA, P. 2004. Engineering a lightweight suffix array construction algorithm. *Algorithmica* 40, 1, 33–50.
- MUNRO, I. 1996. Tables. In *Proceedings 16th Conference on Foundations of Software Technology and Theoretical Computer Science (FSTTCS)*. Lecture Notes in Computer Science, vol. 1180. Springer, 37–42.
- MUNRO, I., RAMAN, R., RAMAN, V., AND RAO, S. 2003. Succinct representations of permutations. In *Proceedings 30th International Colloquium on Automata, Languages and Programming (ICALP)*. Lecture Notes in Computer Science, vol. 2719. Springer, 345–356.
- MUNRO, I. AND RAMAN, V. 1997. Succinct representation of balanced parentheses, static trees and planar graphs. In *Proceedings 38th Annual IEEE Symposium on Foundations of Computer Science (FOCS)*. IEEE Computer Society, 118–126.
- NAVARRO, G. 2004. Indexing text using the Ziv-Lempel trie. *Journal of Discrete Algorithms (JDA)* 2, 1, 87–114.
- NAVARRO, G. AND BAEZA-YATES, R. 1998. A practical q -gram index for text retrieval allowing errors. *CLEI Electronic Journal* 1, 2. <http://www.clei.cl>.
- NAVARRO, G., BAEZA-YATES, R., SUTINEN, E., AND TARHIO, J. 2001. Indexing methods for approximate string matching. *IEEE Data Engineering Bulletin* 24, 4, 19–27.
- NAVARRO, G. AND MÄKINEN, V. 2007. Compressed full-text indexes. *ACM Computing Surveys* 39, 1, article 2.
- NAVARRO, G., MOURA, E., NEUBERT, M., ZIVIANI, N., AND BAEZA-YATES, R. 2000. Adding compression to block addressing inverted indexes. *Information Retrieval* 3, 1, 49–77.
- NAVARRO, G. AND TARHIO, J. 2005. LZgrep: A Boyer-Moore string matching tool for Ziv-Lempel compressed text. *Software Practice and Experience* 35, 12, 1107–1130.
- PUGLISI, S., SMYTH, W., AND TURPIN, A. 2007. A taxonomy of suffix array construction algorithms. *ACM Computing Surveys* 39, 2, article 4.

- PUGLISI, S. J., SMYTH, W. F., AND TURPIN, A. 2006. Inverted files versus suffix arrays for locating patterns in primary memory. In *Proceedings 13th String Processing and Information Retrieval (SPIRE)*. Lecture Notes in Computer Science, vol. 4209. Springer, 122–133.
- SADAKANE, K. 2002. Succinct representations of lcp information and improvements in the compressed suffix arrays. In *Proceedings 13th Annual ACM-SIAM Symposium on Discrete Algorithms (SODA)*. 225–232.
- SADAKANE, K. 2003. New text indexing functionalities of the compressed suffix arrays. *Journal of Algorithms* 48, 2, 294–313.
- SUTINEN, E. AND TARHIO, J. 1996. Filtration with q -samples in approximate string matching. In *Proceedings 7th Annual Symposium on Combinatorial Pattern Matching (CPM)*. Lecture Notes in Computer Science, vol. 1075. Springer, 50–61.
- ULLMAN, J. 1977. A binary n -gram technique for automatic correction of substitution, deletion, insertion and reversal errors in words. *The Computer Journal* 10, 141–147.
- WILLIAMS, H. E. AND ZOBEL, J. 2002. Indexing and retrieval for genomic databases. *IEEE Transaction on Knowledge and Data Engineering* 14, 1, 63–78.
- WITTEN, I. H., MOFFAT, A., AND BELL, T. C. 1999. *Managing Gigabytes: Compressing and Indexing Documents and Images*, second ed. Morgan Kaufmann Publishers.
- ZIV, J. AND LEMPEL, A. 1978. Compression of individual sequences via variable-rate coding. *IEEE Transactions on Information Theory* 24, 5, 530–536.
- ZOBEL, J. AND MOFFAT, A. 2006. Inverted files for text search engines. *ACM Computing Surveys* 38, 2, 6.